



Accessibility Guide

Contents

Points to note at a glance.....	3
Introduction	4
Information for visitors with limited mobility.....	5

Arrival and Parking

Pre-arrival & how to get here.....	6
Parking.....	7
Wheelchair availability.....	9
Toilet facilities.....	9
Walking to the crossing points.....	10
The causeway.....	11
Boat landings and crossings.....	12

The Island

Steward's House.....	15
Food facilities and retail	16
Toilet facilities	19
Harbour Front.....	19
The Castle.....	20
Gardens.....	24
Mobility scooter rental.....	25
Sensory information.....	25
Families.....	26
Pets and assistance animals.....	27
Sound level readings across the site.....	28
Accessibility map.....	30

Points to note at a glance



- Ancient, rugged and steep, some parts of the island and castle can be challenging to navigate. Paths around the island are steep, cobbled and uneven with intermittent handrails.
- There are unguarded edges and steep drops. Sensible footwear is recommended.
- Unfortunately, it's not possible to take a wheelchair or pushchair up to the Mount summit.
- Take care when accessing the site via the boats and causeway/ There are uneven surfaces and coastal terrain, which may be slippery.
- There is a mobility scooter available for hire, this is suitable for a limited route around the island, which is shown on the accessibility [map](#).



- An induction loop for the hard of hearing can be found in the Ticket Office, the Barge House Visitor Centre, Learning Hub and in the island shops.
- Quiet spaces have been identified around the site and highlighted on the accessibility [map](#).



- A brass tactile model of the Mount can be found in the Barge House Visitor Centre on the harbour front.



- There are accessible public toilets on the island and mainland areas.
- All carers are admitted free of charge with registered disabled visitors.

Contact details

Address: St Michael's Mount, Estates Office, Marazion, Cornwall, TR17 0EL

Telephone: 01736 710265 (for tide and ferry information)

Email: changehouse@stmichaelsmount.co.uk

Website: stmichaelsmount.co.uk

Introduction

This guide is designed to provide clear information about the access challenges associated with visiting St Michael's Mount, to help you plan your visit in advance and ensure a safe and enjoyable experience.

St Michael's Mount is a tidal island located in Mount's Bay. The castle and garden are open to the public at selected times throughout the year. Due to the unique nature of our setting, access to the island is either via a cobbled causeway during low tide or by ferry boat at high tide.

Please be aware that the island is a rugged, natural environment. Reaching the castle at the summit requires a steep ascent along an uneven cobbled pathway, which can become slippery when wet. As such, access to the castle is particularly challenging for visitors with limited mobility. While there are benches positioned along the route for rest stops, it is not possible to take wheelchairs or pushchairs up to the castle.

We work closely with local disability organisations, including Disability Cornwall, Mobility Cornwall, and the Sensory Trust, as well as the National Trust's access team, to improve our facilities and ensure our services are as inclusive as possible.

During the peak summer months, the island can become busy. For those seeking a quieter experience, we have identified several peaceful areas on our access map where visitors can take a break away from the crowds.

Our Visitor Centre, located in the Barge House on the harbour, offers step-free access and provides an engaging experience for all visitors. This includes a short film about the Mount, interpretative displays covering its history, and a bronze tactile scale model of the island.

We hope this information helps you prepare for your visit. Should you have any further access-related enquiries, please contact our team in advance.



Information for visitors with limited mobility on St Michael's Mount

Carers accompanying a registered disabled visitor are admitted free of charge. Visitors with limited mobility or wheelchair users are welcome to explore the village and harbourside areas of St Michael's Mount, including the shops and cafés. However, please note that all pathways are cobbled, which may present difficulties for wheelchair users.

Unfortunately, access to the castle is not possible for wheelchair users or those with pushchairs, due to the steep incline, steps, and uneven, rocky terrain. The lawned area of the garden is accessible by wheelchair, but further exploration of the gardens is restricted by steps and steep pathways.

We recommend contacting our team in advance of your visit if you have specific access requirements, so we can offer tailored advice and supports.

Arrival and Parking

Pre-Arrival & How to Get Here

Clear, large-format signage is available in Marazion on the mainland to guide visitors to St Michael's Mount.

The nearest major town is Penzance, located approximately 2 miles away. From Penzance, visitors can access Marazion via public footpaths or travel by car, bicycle, bus, or taxi.

The nearest train station is in Penzance. Adjacent to the station is a bus terminal offering regular services to Marazion. Accessible taxis can also be pre-booked from Penzance.

SatNav Directions

Please use postcode TR17 0EG for navigation.

From North Cornwall & the A30:

Follow the A30 past Hayle and continue toward Penzance. Approximately one mile after the village of Crowlas, take the second exit at the roundabout, signposted Marazion. At the main road junction, turn left into Marazion.

From Penzance:

Head east on the A30 for about three miles. At the roundabout, take the third exit, signposted Marazion. Continue to the main road junction and turn left into Marazion.

From Helston and The Lizard:

Take the A394 from Helston toward Penzance. After around nine miles, proceed straight over the first roundabout (ignoring the left-hand turn to Marazion). At the next roundabout, take the first exit, signposted Marazion, and continue to the junction with the main road, where you turn left into the town.

Parking

There are 20 clearly marked disabled parking bays in the St Michael's Mount Visitor and Long Stay Marazion carpark. Blue Badge holders and National Trust Members must pay to park in all car parks. There is a public footpath from this car park along the seafront to Marazion beach and the start of the causeway (approx. 10-minute walk). The pathway from the car park to the causeway crosses a soft, sandy beach.

The nearest car park to the causeway and landing points is the Short Stay Car Park. This is clearly signposted and includes designated accessible parking. During busier times of the year, staff will be available on site to assist with access where needed.

Short Stay Car Park

Disabled Spaces: 3 spaces available

Location: On the right-hand side after the office building within the car park

Ticket Machines: Positioned next to the blue badge spaces, on the right after the office building



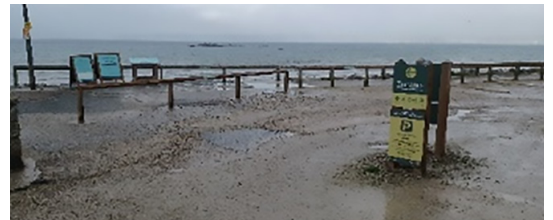
Long Stay Car Park

Disabled Spaces: 14 spaces available

Location: On the left side after the entrance, beyond the coach parking area

Ticket Machines: Located on the left after entering and to the right of the disabled spaces.

Note: The bays are divided by wooden beams on the ground. Please take care, as these may present a trip hazard.



Godolphin Car Park

Disabled Spaces: 4 spaces available

Location: On the left-hand side of the car park, approximately 15 metres from the entrance

Ticket Machines: Opposite the disabled spaces, on the right as you enter the car park.

We recommend arriving early during peak times to secure a space, and advise all visitors to display a valid Blue Badge when using designated disabled parking.



The parking payment machines are the same height in all the car parks.

The height is 140cm to the screen and 130cm to the keyboard (for entering the car registration).

The overflow car park is in use for all vehicles over 5.5 metres in length. This car park is situated opposite the Long Stay car park, there are no disabled spaces in this car park and it is located in a grassy field. However, parking staff will always try to park blue badge holders in the best possible spaces.

The ticket machines in the overflow car park are situated next to the pedestrian exit.

Access from this car park means crossing the main road into Marazion and caution should be taken when doing so.

The paths from this car park are tracks rather than paved or cobbled roads.



Wheelchair availability

There are two beach wheelchairs available for use from the Long Stay car park on a first come, first served basis. They are available from Cornwall mobility and, while they are free to use, donations are welcome from those that are able. There is also a map below which details the availability of these wheelchairs across the county.



Toilet facilities

There are public toilets located off the path from the Long Stay car park heading towards the causeway. There are accessible toilets here with step free access and baby changing facilities.



Walking to the crossing points

There is a public footpath from the Long Stay car park along the seafront to Marazion beach and the start of the causeway (approx. 10-minute walk).

The pathway from the car park to the causeway crosses a soft, sandy beach.

The exit from the car park is protected by wooden posts and the path widens after leaving the car park.

There is also an alternative route around the car park to a pathway that is not as wide as the route via the car park exit.

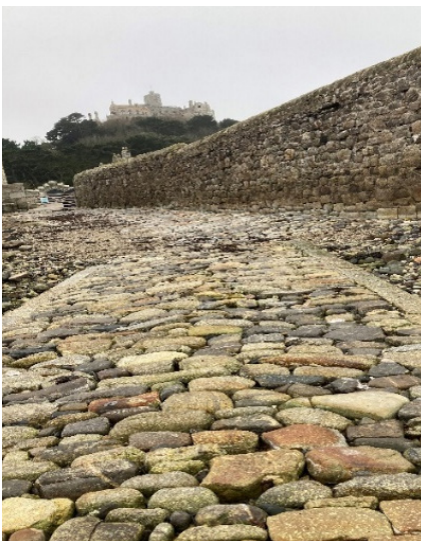
The final section of the path from the car park exit narrows at the end and becomes more sandy and uneven.





The Causeway

The distance from the start of the causeway to the entrance of the harbour is approximately 500 metres. The entire route is flat but cobbled, with uneven surfaces in places. While the causeway is accessible on foot, it may present significant challenges for visitors using pushchairs and is not recommended for standard wheelchairs due to the uneven terrain. The final 30 metres of the causeway includes a slope with an incline of approximately 8°, and this section is also surfaced with irregular cobbles, which may be particularly difficult to navigate. Visitors are advised to wear suitable footwear and to plan ahead if mobility is a concern.



Boat landings and crossings



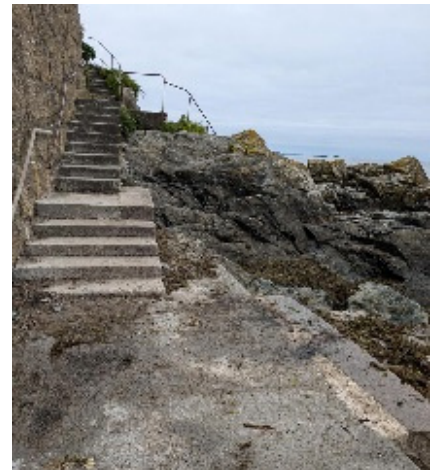
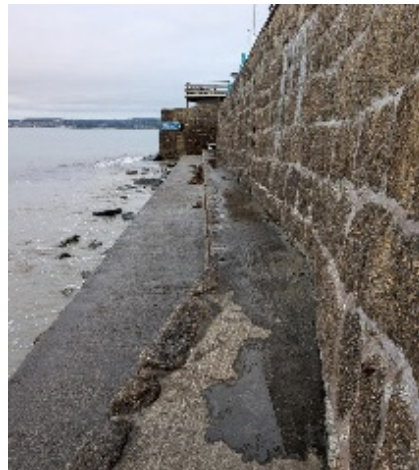
At the Short Stay car park, there is a slipway going onto the beach which, gives access to the Chapel Rock landing; this slipway is on a 10° slope.

Chapel Rock landing is accessed via crossing the beach towards the causeway. To the right of Chapel Rock, up to the landing, if available, there are 4 steps 150mm deep onto the flat surface. If this is covered by the sea you will have to go over the rock using 31 steps, which are 230mm deep and have no handrail.

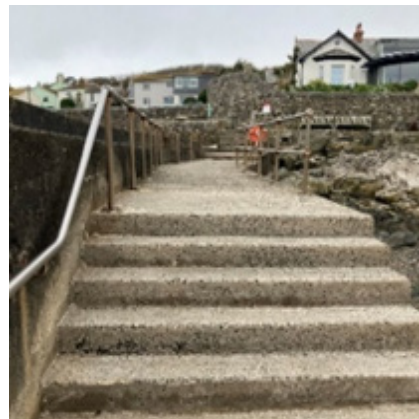




Gwelva landing is accessed via a walk east from the slipway into town, the landings are located behind the Post Office in the town square. There is a slope of 4° leading down to 36 steps at 150mm to 200mm. This leads to the boat landing; these steps have handrails provided. There is a seating area above the steps.



There is also access down the 20 steps next to the Godolphin, these are 170mm high and have a handrail. There is then a walk along the harbour front with two levels of walkway before a small set of steps.



To access Top Tieb boat landing, head east into town passing the church on the right and turning down Leys Lane, there will be a slope of 4-6°, after which there are 12 steps at 190mm high.

A variety of boats operate during the summer which, although similar, have slight variations in design and consequent level of challenge regarding accessing and exiting the boat. There are 4 steps from the deck of the boat, which measure 150mm deep with a handrail. It is also important to remember that the boat will be moving slightly with the waves when embarking.

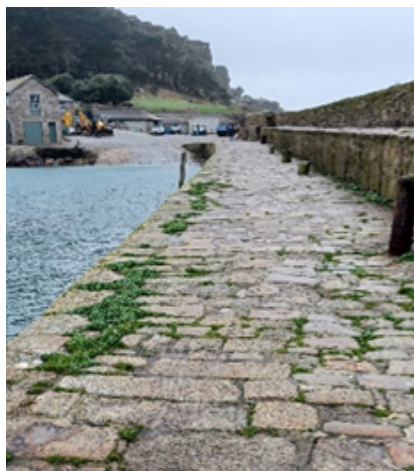


Island landing points:

Western Quay – This is the normal disembarking location. Approx. 15 visible steep steps (180 – 210mm height) are visible which would prove a challenge for many with limited mobility. A metal handrail is present on both sides for the top half of the stairs, but only on the harbour wall side for the bottom half. The harbour quays are also made up of uneven stones, which is the same either side of the harbour. Both have an unprotected drop into the water to one side.

Queen's Steps – Usually used for departing from the island. Two sets of 12 steps (approx. 200mm high). A metal rail on one side for each set of stairs – continuing on same side so that a visitor can have continuous use of the rail.

King's Steps – Used when the tide is too high for other landing points on the island.



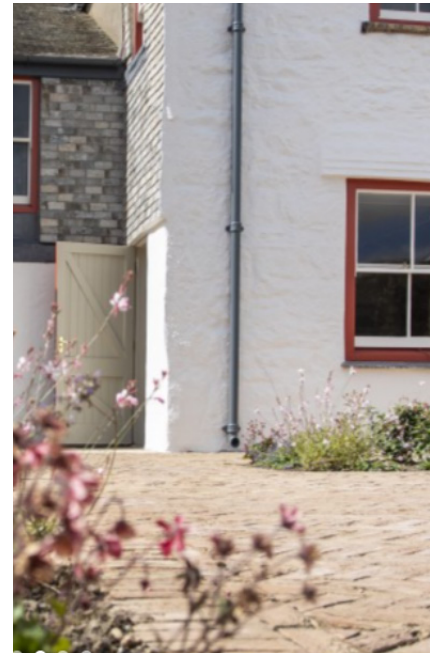
The Island

Steward's House

The Steward's House is a gallery space with small steps at the entrance. There are small raised areas in the entrance to the rooms in the house to consider when entering and exiting.

There is step free access located at the back of the building, through a side door between the Steward's House and the Island Shop.

The gallery is a quiet space, especially the garden at the back of the gallery.

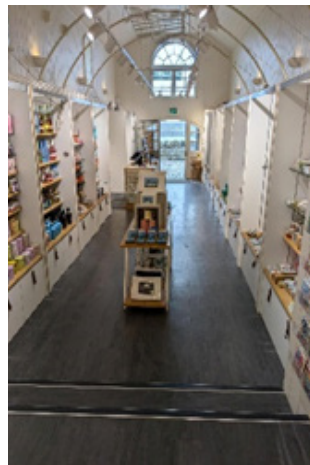


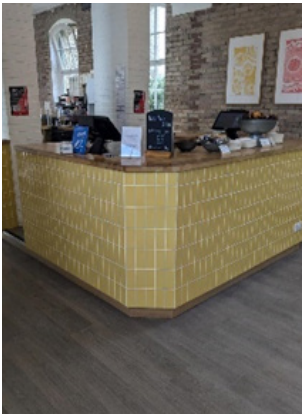
Food Facilities and Retail

Island Shop and St Michael's Mount Shop

Both shops are accessible for wheelchair users, but do have limited space. Both are well-lit with all merchandise clearly priced. Many items are at low level and assistance can be provided by the staff, on request.

The Island Shop has steps to access the rear of the shop, however this part of the shop can be accessed, step free, through a side door at the left side of the shop entrance.





Island Café

The entrance and exits of the café are accessed via a step. Ramps are available, on request, to enable access.

There is an outside seating area at the Island café. The café has a gravelled area, so care must be taken when crossing this.





Harbour Loft

The Harbour loft is an afternoon tea venue near to the Mount Shop. This can be accessed via some steps or using a ramp at the side door.

The ramp can be accessed, step free, via a gravel path that runs behind the houses accessed from the main entrance, rather than the steps opposite the Mount Shop.

There is a small lip on the side entrance door to be aware of when entering and exiting via the ramp.





Toilet Facilities

Toilets are available at both the east and west side of the village. Both toilet blocks have step-free access and the east toilets have wheelchair access. There is also an additional accessible toilet on the harbour front.

Both accessible toilets are fitted with automatic audio description devices and emergency pull chords.

The east and west accessible toilets have baby changing facilities.



Harbour Front

The Harbour front is flat, but cobbled, the cobbles are a little uneven in places.

Inside the Barge House Visitor Centre, there is a tactile brass model of the Mount.

There is also interpretation information and a video about the site for visitors.

The Castle

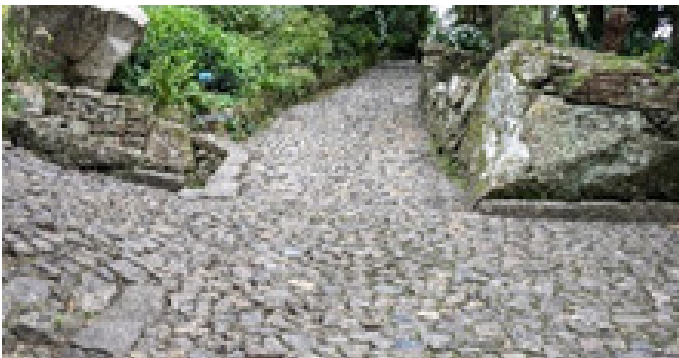


The path through the village is flat, but cobbled.

Outside the St. Michael's Shop, the climb up to the castle starts. There are 9 steps outside the toilets which are 160mm high.



The slope leading up to the Pilgrim Steps is at an incline of 10° and is cobbled, but flat.



The Pilgrim Steps consist of 40 irregular steps between 100mm to 200mm, there are handrails on both sides of the steps.

The slope after the steps is between 13° and 15° with handrails on one side, for about 12ft.



Near the Giants Heart, there is no handrail. The slope is cobbled and, in some places, uneven. There are benches to take a rest on at intervals along the path.

The next 15 metres are very irregular and are around 130mm high with no handrail.



It is a short flat walk to the West Door, steps, which are 40 in total and are 200mm high.

To the left of these steps, there is an easier set of steps, which are 16 in total and are 150mm high, these have no handrail.

This route into the West Door is easier, but this goes against the natural flow of people, as this is the exit door steps.

The Mount is situated on top of a steep cliff, this may be an issue for those that suffer with vertigo.





Inside the castle

Inside the castle there are some things to consider when planning a visit.

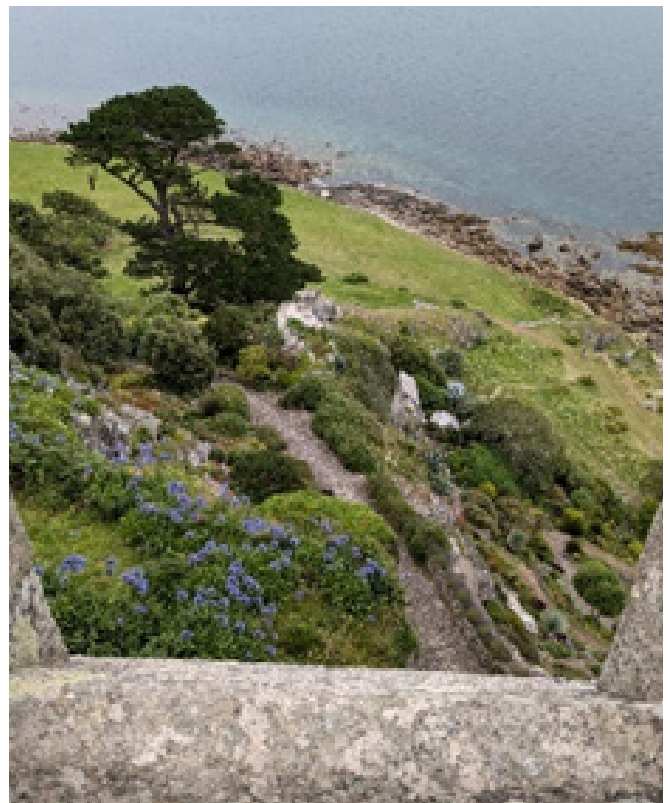
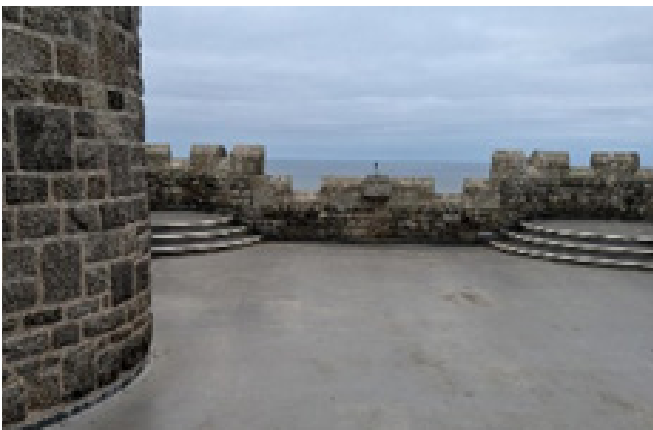
There are a number of sets of steps within the castle, the first small set are at the entrance to the castle.

There are also some narrow spaces to navigate on the route through the castle.

There are a number of small steps that may be hard to spot at a number of room entrances.

The roof terrace is a more open space, where visitors can take a rest after the first part of the route through the house.

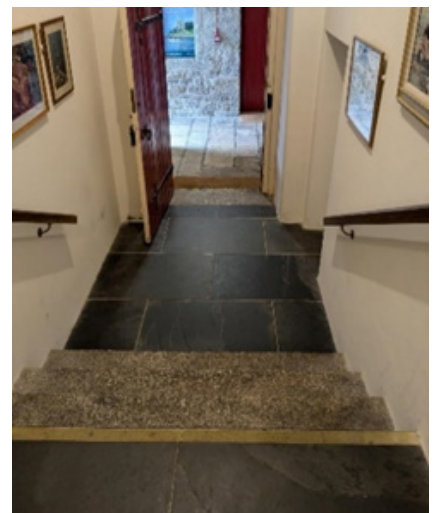
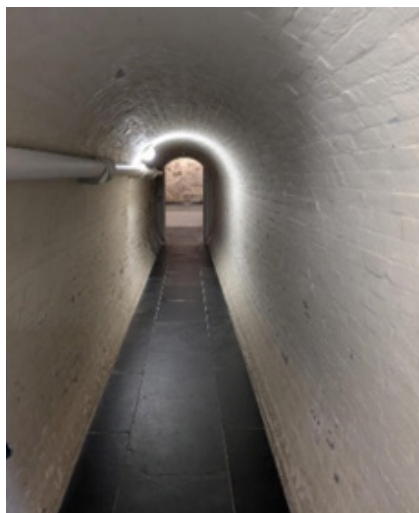
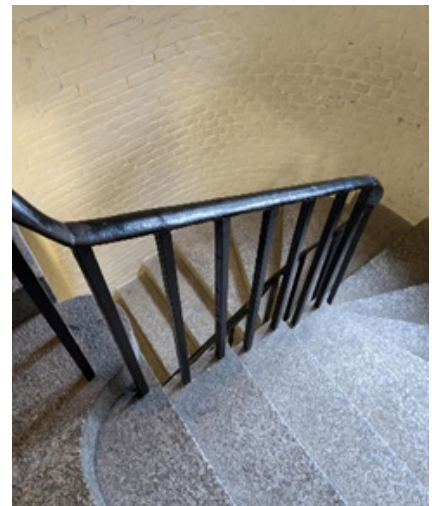
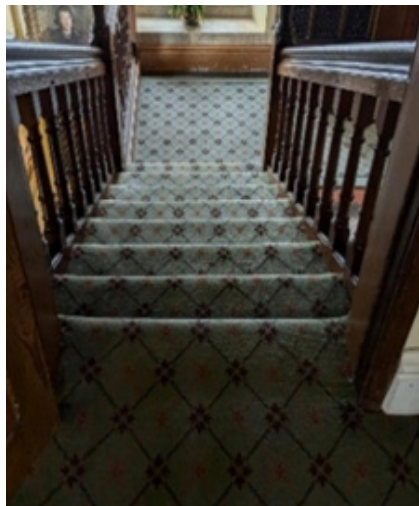
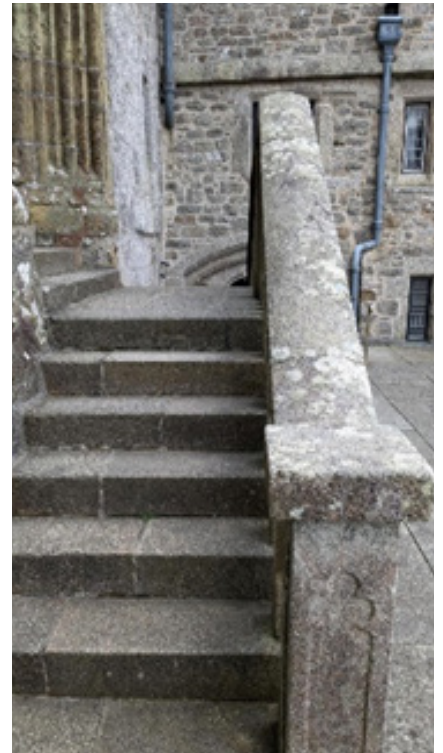
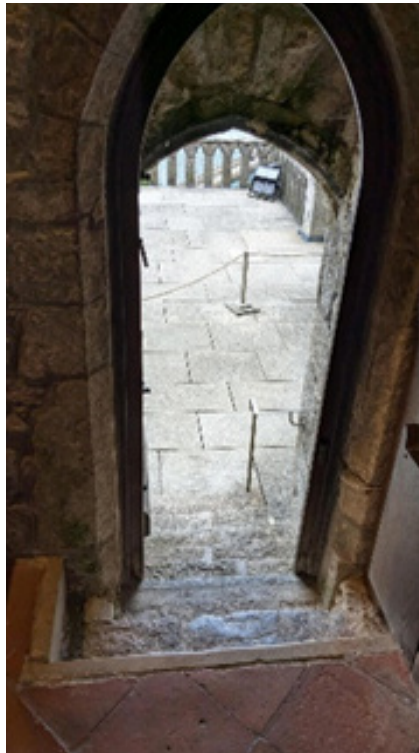
For visitors who suffer from vertigo, the terrace is at quite a height and there is a steep drop from the edges.



Entrance and exit of the church is made via two sets of steps, the set of steps at the exit has a low doorway and the steps are quite steep and narrow.

There is a spiral staircase that leads to the final room on the tour is the Garrison room, this room has a small step down upon entry, is narrow and can be quite loud if busy.

Before leaving, there is a brick tunnel which could be a challenge for those who do not like being in enclosed spaces. This is a short walk to the exit of the castle via a small set of steps.





Gardens

Once in the village there is a gravel path to the left which leads to the garden and Island Café.

The start of the garden is grassy with a steady incline, in parts of 7°. Walking the grass, will eventually lead to the first set of steps, which leads into the terraced gardens.

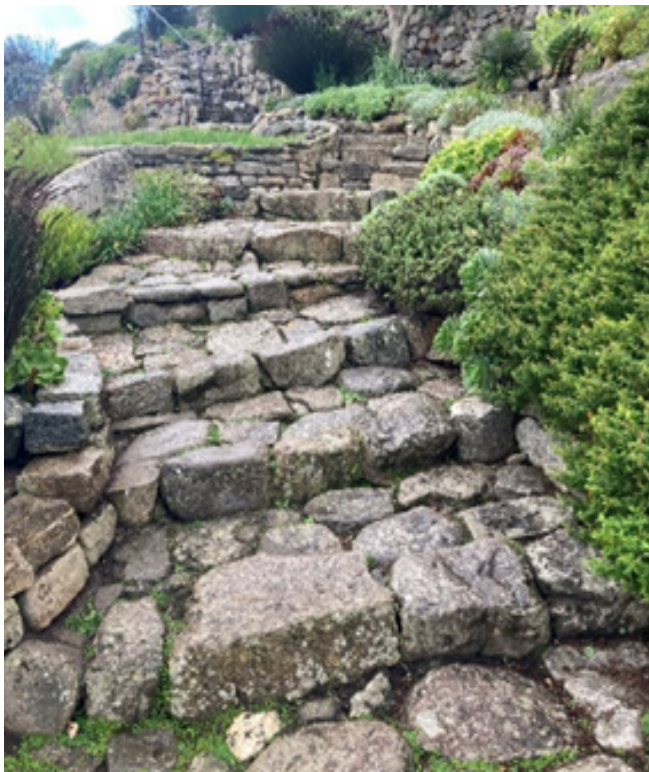


The first set of steps are approx. 100mm with a 230mm high step through a small gate. Leading to 20 plus steps between 100mm-230mm directs to the first hand-rail as part of the climb to the terraced garden.

It is approx. 46 steps to the top, with the handrail on the left, these steps are mostly 240mm high.

It needs to be noted all the steps are uneven, so care needs to be taken.

There is an easier set of steps which are 16 in total and are 150mm high, these have no handrail.





Mobility scooter rental

There is currently one self-drive, single-seat, powered mobility vehicle, available at £3 to the visitor, for use around the village area of St Michael's Mount.

A full demonstration will be given by a trained member of staff.

Please call 01736 710265 to book on a first come, first served basis.

Sensory information

An induction loop for the hard of hearing can be found in the Ticket Office, The Barge House and in the island shops.

There is a brass tactile model of the Mount available for all visitors at the Barge House visitor centre.

There are quiet spaces on the site that have been charted on the access [map](#) here.

The gardens are also a great place to enjoy a sensory experience, with beautiful views, sights and smells.





Families

The causeway to St Michael's Mount is cobbled, which can make it challenging to navigate pushchairs and we would recommend using hipsters or baby carriers as an option.

However, if you do decide to bring pushchairs, we have an area on the island to park them. This area is covered, but not enclosed.

The climb to the castle is steep with steps and uneven surfaces, so pushchairs are not allowed.

There are baby-changing facilities on the island and the Island Café has a number of high chairs and serves a number of suitable snacks, drinks and meals for children.

An informative and educational children's activity is available in the castle.

Family tickets are available for two adults and up to three children, further concessions are available for single adult families.

Pets and assistance animals

Dogs & Pets

Dogs are welcome in the harbour and village of St Michael's Mount during opening hours, between 1st October and 31st March inclusive.

When can I bring my dog?

Dogs* and any other pets are not permitted to visit the island between 1st April and 30th September inclusive.

We know that this will disappoint some visitors. We know how important dogs and pets are for many people, but it was also clear that the experience of visiting us has improved as a result of having no dogs and other pets on the island during the busier times of the season.

Dogs are welcome to visit the harbour and village on the island from 1st October to the 31st March inclusive, when the island is open to the public. Please note that dogs* and other pets are not permitted to visit the castle or garden during this period.

*Apart from Assistance Dogs, please see full information below.

Assistance Dogs

Assistance Dogs are permitted to visit St Michael's Mount, the harbour, village, castle and the garden at all times throughout the year, when we are open.

We welcome your feedback to help us continuously improve.
If you have any comments please phone us on
01736 887822 or email changehouse@stmichaelsmount.co.uk

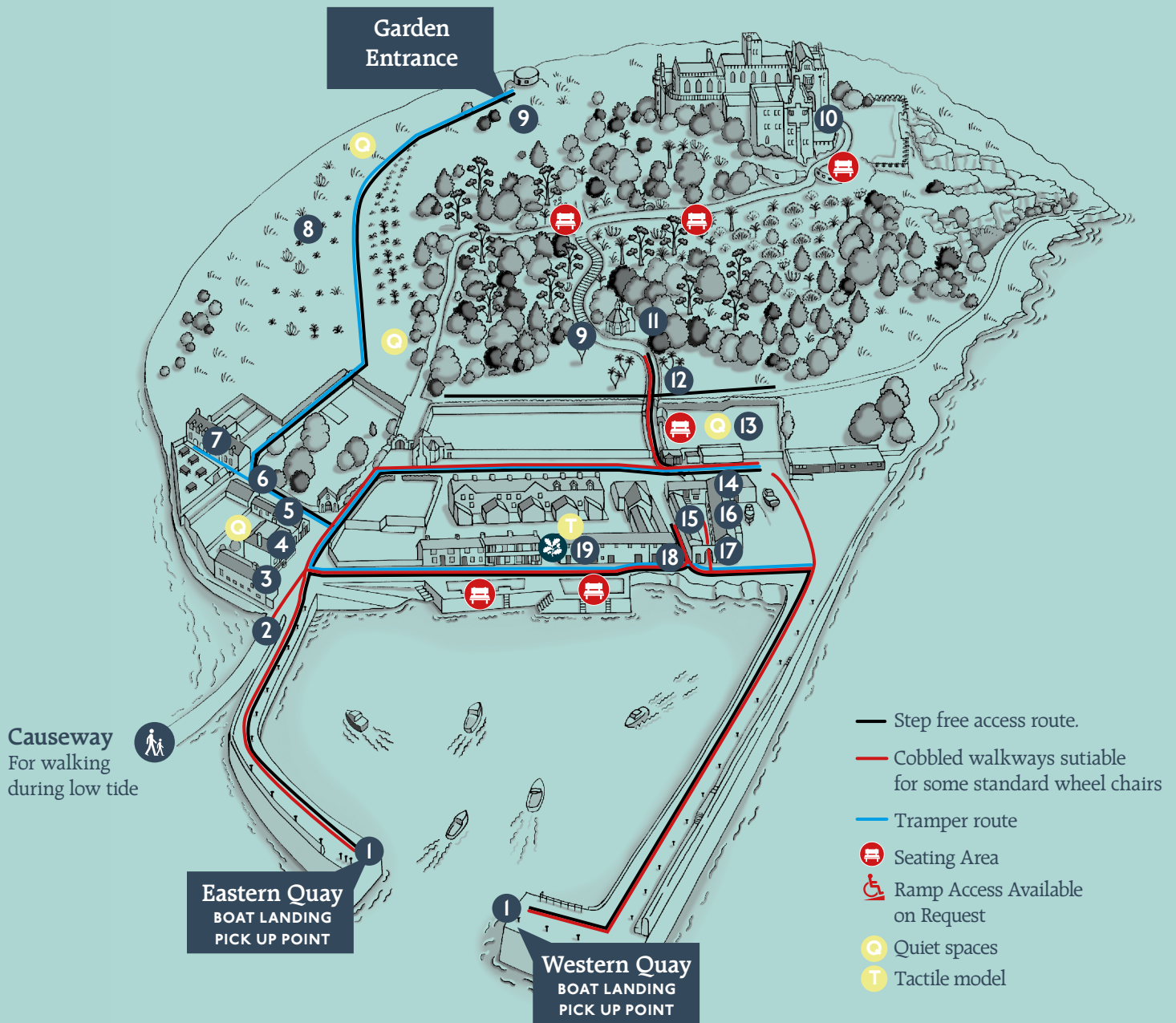
Sound level readings across the site

To help visitors understand the sound levels at the site, the following table shows the ranges of decibels recorded at various locations on the site, with the causeway both closed and open, alongside an equivalent sound example.

LOCATION	DBA READING CAUSEWAY CLOSED	DBA READING CAUSEWAY OPEN	EQUIVALENT SOUND
Overflow car park	50 – 64		From moderate rainfall or a refrigerator to a normal conversation or electric toothbrush.
Long Stay Car Park	52 – 71		From moderate rainfall or refrigerator to a washing machine or dishwasher.
Short stay car park	53 – 68		From moderate rainfall or a refrigerator to a normal conversation or electric toothbrush.
Beach	54 – 64		From moderate rainfall or a refrigerator to a normal conversation or electric toothbrush.
Causeway		55 – 80	From moderate rainfall or a refrigerator to a noisy restaurant or vacuum cleaner.
Landing Chapel Rock	60 – 71		From a normal conversation or electric toothbrush to a washing machine or dishwasher.
Boat	74 – 81		From a washing machine or dishwasher to a noisy restaurant or vacuum cleaner.
Bowling Green	48 – 78	55 – 80	From moderate rainfall or a refrigerator to a noisy restaurant or vacuum cleaner.
Change house	55 – 67	60 – 78	From moderate rainfall or refrigerator to a washing machine or dishwasher.
Tennis Court	42 – 63	45 – 63	From a quiet office or residential area to a normal conversation or electric toothbrush.
Café	63 – 75	66 – 74	From a normal conversation or electric toothbrush to a washing machine or dishwasher.

LOCATION	DBA READING CAUSEWAY CLOSED	DBA READING CAUSEWAY OPEN	EQUIVALENT SOUND
Lawn	47 – 52 (70 busy area)	41 – 64	From a quiet office or residential area to a normal conversation or electric toothbrush. In busy spaces, a washing machine or dishwasher.
Top of the Mount	52 – 66	59 – 71	From moderate rainfall or refrigerator to a washing machine or dishwasher.
Castle area 1	52 – 91	60 – 74 (48 quiet)	From moderate rainfall or refrigerator to a blender or heavy traffic.
Castle area 2	42 – 83	50 – 79	From light rain, quiet office or residential area to a noisy restaurant or vacuum cleaner.
Terrace	54 – 77	53 – 77	From moderate rainfall or refrigerator to a washing machine or dishwasher.
Mount Shop	55 – 72	59 – 70	From moderate rainfall or refrigerator to a washing machine or dishwasher.
Island shop	54 – 69	58 – 74	From moderate rainfall or refrigerator to a washing machine or dishwasher.
Church	43 – 53	56 – 74	From light rain, quiet office or residential area to a washing machine or dishwasher.
Harbour	55 – 63	55 – 70	From moderate rainfall or refrigerator to a washing machine or dishwasher.
Barge House	50 – 65	57 – 73	From moderate rainfall or refrigerator to a washing machine or dishwasher.
Steward's House	40 – 52	39 – 58	From light rain, quiet office or residential area to a normal conversation or electric toothbrush.
Steward's garden	39 – 53	39 – 61	From light rain, quiet office or residential area to a normal conversation or electric toothbrush.
Route to checkpoint	50 – 62	50 – 71	From moderate rainfall or refrigerator to a washing machine or dishwasher.
Pilgrim Steps	50 – 56	58 – 72	From moderate rainfall or refrigerator to a washing machine or dishwasher.
Castle path	50 – 74	51 – 72	From moderate rainfall or refrigerator to a washing machine or dishwasher.
Gravel path at back of houses	52 – 69	49 – 75	From moderate rainfall or refrigerator to a washing machine or dishwasher.

Accessibility Map



- 1 Boat Landing/Pick Up
- 2 Causeway to Mainland
- 3 The Change House
- 4 The Steward's House
- 5 The Island Shop
- 6 Toilets
- 7 The Island Café

- 8 Main Lawn
- 9 Ticket Check Points
- 10 The Castle Entrance Door
- 11 The Dairy
- 12 Dairy Lawn
- 13 Tennis Court Lawn
- 14 Afternoon Tea at The Harbour Loft

- 15 Toilets
- 16 The Mount Shop
- 17 The Learning Hub
- 18 Baby Changing & Accessible Toilet
- 19 The Barge House Visitor Centre
- National Trust Information